

Holiday Notecards

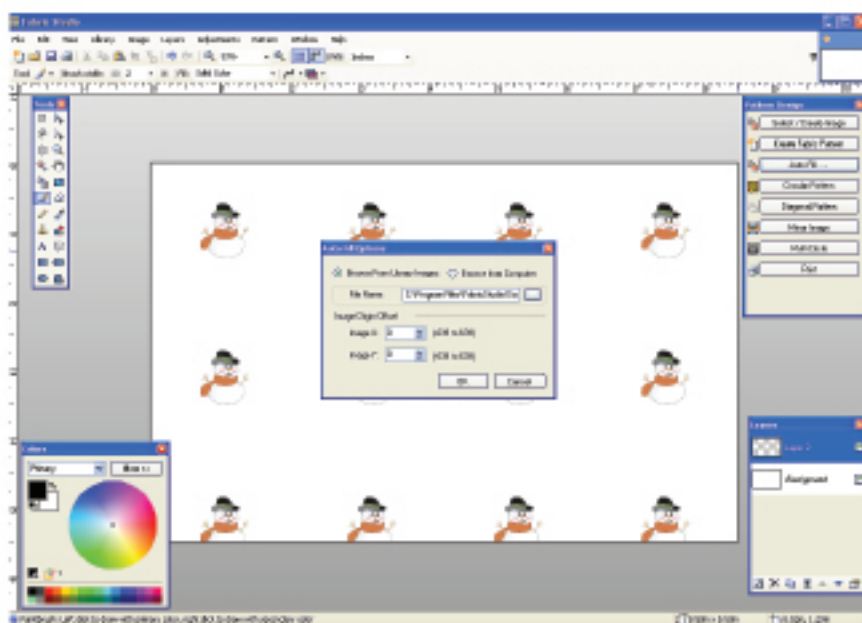
The Fabric Studio™ can also be used to design scrapbooking pages, postcards and even notecards. The same principals apply to designing a Holiday Notecard that apply to fabric design, except you will just be printing your project out on paper. I suggest that you get yourself some cardstock paper on which to print your Holiday Notecards on.

In this project we will cover custom sizes, image drops and photo image placement. You will be using the Auto Fill function of the software to achieve this. This will be a two part process: first you will be making a custom size image, and once your image is complete, you will then import the image to a standard 8 1/2 by 11 sheet. Once you have your basic notecard complete, I will give you some alternative for finishing off your Holiday Notecards.

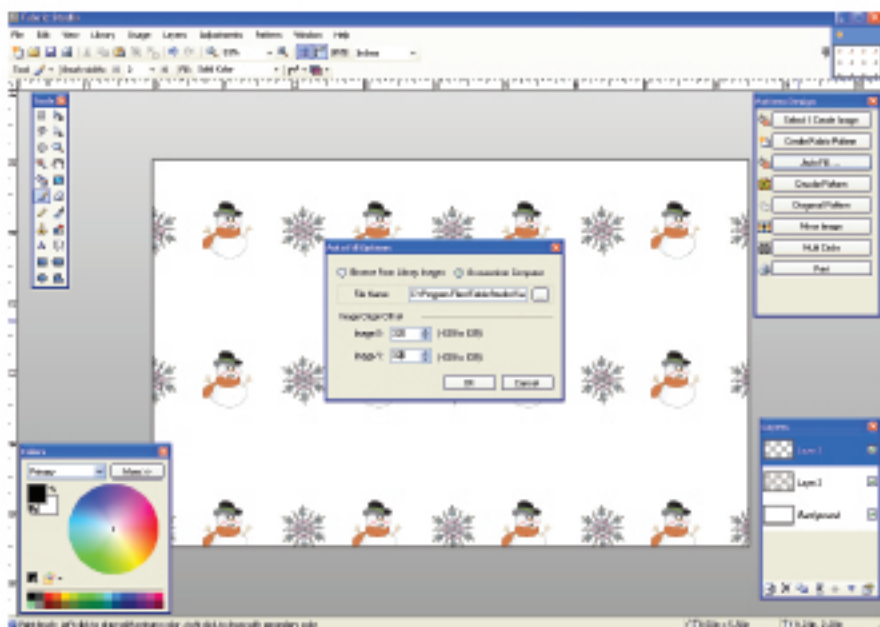
Part 1 Custom Size Image:

File/New/Custom: Set your resolution at 300 dpi, height 5.5 and width 8.5 and click Okay. Your new image workspace may be a little to large, depending on your computer setup. By using the Window Box you you can adjust the size by using the pulldown. I picked 33% for my workspace area.

Go to the Pattern Box, and click on Auto Fill. Select Browse From Library Images/Seasonal/Color/Snowman and click Okay. When you choose Auto Fill, the program will automatically add a new layer to your workspace.



Your next step will be to add the Snowflake Image, and create a drop movement. Go to Auto Fill, and this time before you select your image go to the Origin Offset and place the # 320 in the Image X Box and #320 in the Image Y Box. Now go to Select Browse From Library Images/Select/Seasonal/Color/Snowflake and click Okay.

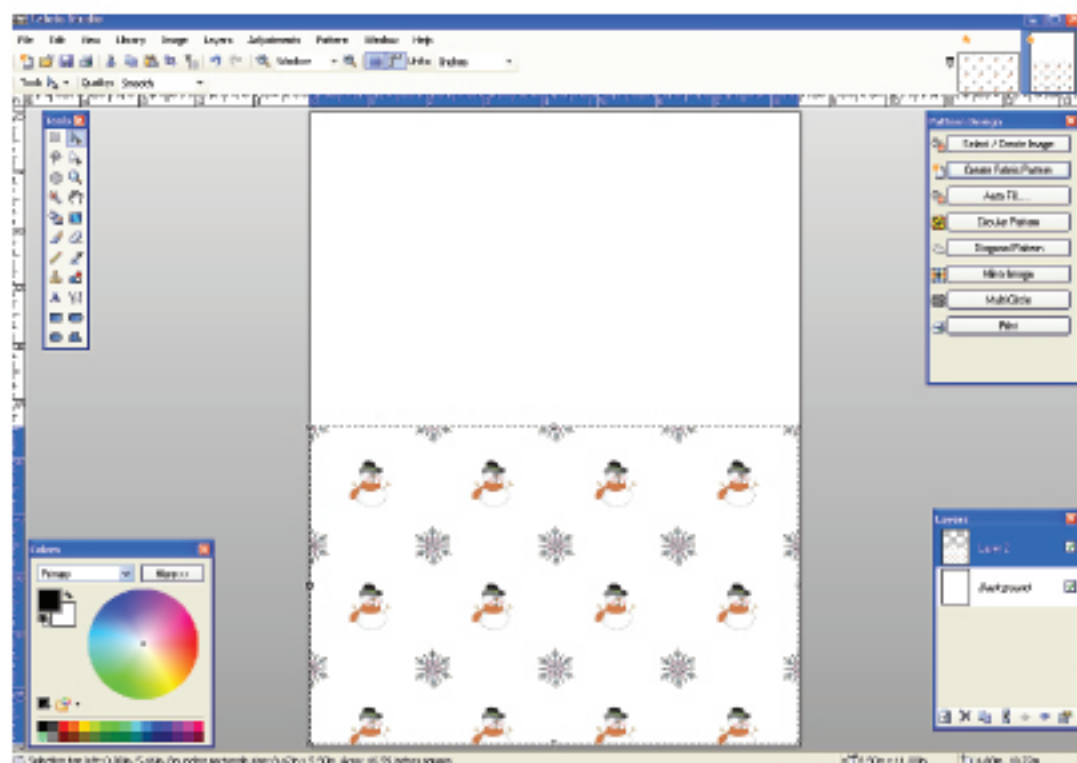


The images will appear first to be going straight across the workspace, but you will notice that the Snowflake will drop down, as soon as the offsets is applied.

At this point the first phase of the project is complete. You can save the file as a jpeg or a png file. If you save your image as a .png file, before doing so, delete the background layer, so in the future you can add texture or color to your project.

Part 2 Creating your Notecard:

Go to Pattern Box and click on Create Fabric Pattern. Add a layer, then go to back to your first Image, and using the Select Tool click on your first image. You will then use the Copy Tool, go back to your new workspace, and Paste the first image into your sheet. Make sure that you are on the second layer. Your first image will appear on the top, and you will need to move it down to the bottom of your sheet. Remember you are making a Notecard, so the image will only appear at the bottom, so that you will have a Notecard once you fold it in half.

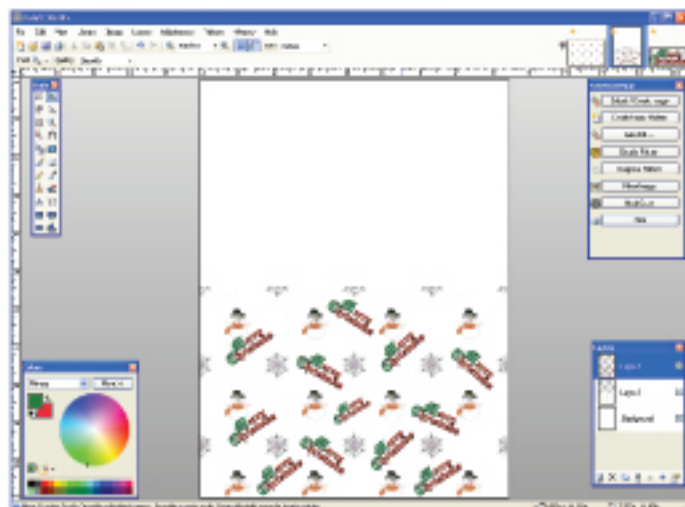


At this time you can save your Notecard and print it out, or you can keep going with your design. To save it use Save As either .jpeg or .png.

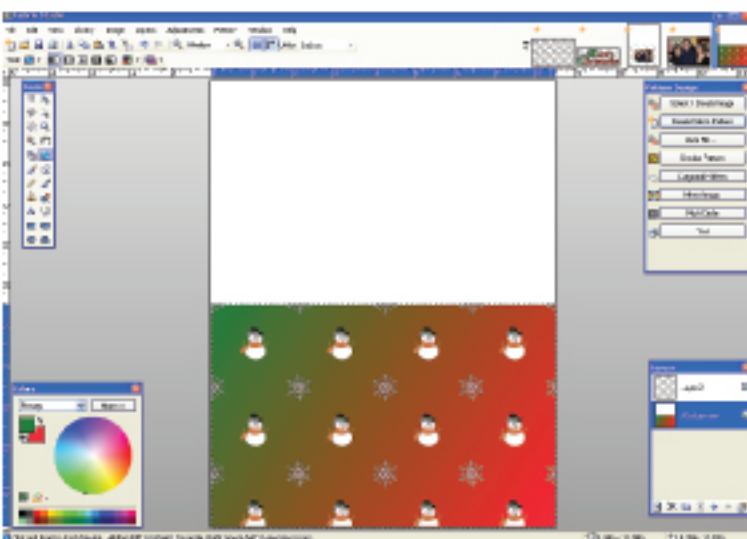
Now its time to get creative with your Notecard. Try adding the phrase "Merry Christmas" to your design. Open the image from the Word Library. Before I brought the image over I reduced its size to make it easier to work with. Add a layer to your Layer Box before bringing the phrase over. Until you feel comfortable with using layers, keep on adding a new one each time you add the phrase. To Rotate the phrase, right click on one of the corners. You will know when you are doing it right when a hand appears.

Merry Christmas

(To copy image: Select Pixel Tool/Copy/Paste)



Now try adding color or texture to your background layer. If you have saved your original image as a .png file, and removed the background layer before saving, you can easily add color or even a gradient color to your background layer.



Why not try adding your favorite holiday photo to your Notecard? You can use Select/Image From Computer to retrieve your photo. Remember to change your file extension from .png to .jpeg. Before you bring a photo into the Fabric Studio, make sure the quality is good, and you have already resized and adjusted the image down.

Now follow the same procedures for selecting/copying/pasting your image into your Notecard. Don't forget to add a new layer before you start. Once your image is in the correct place use the Deselect Tool to finish.

