

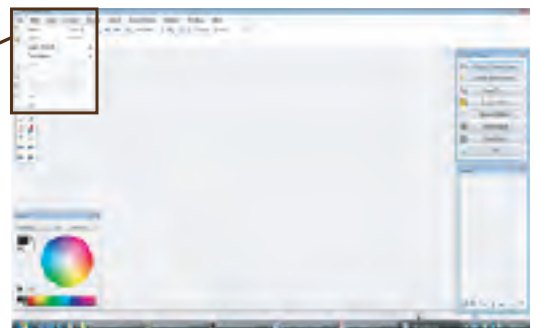
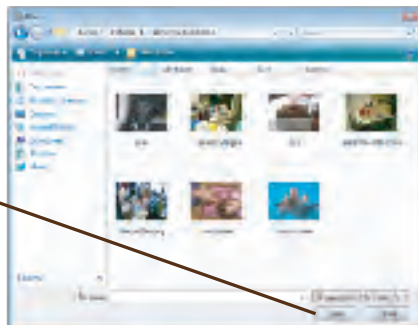
Import Your Own Photo

How to import your own photo or graphic

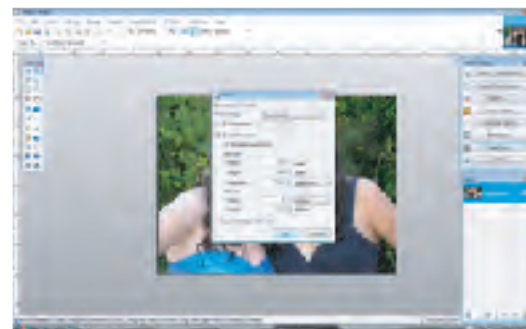
Before you begin you will need to make sure you have high resolution photos. You can either edit and resize the photos in your photo software or in Fabric Studio™. If you can save your image as a jpeg before you begin, that is the best file type to use. If you resize in different software, make sure that your photos are not too large. Remember, your working space for your Fabric Swatch is only 2.125" by 2.125", so there is no need to start with any photo larger than a 3" by 5". It is best that you save the photos in a separate file in case you want to use them again.

Step 1: Open Your Photo in Fabric Studio™: on the top row click File and Open.

Locate your photo and click Open.



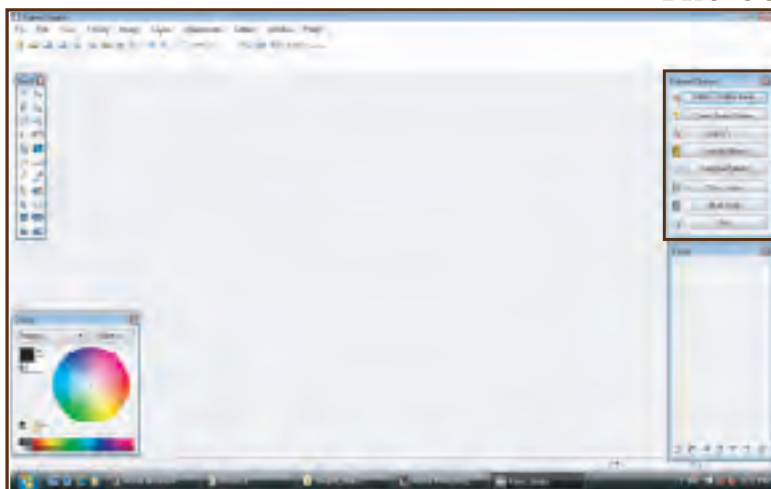
Step 2: Resizing Your Photo: 1. On the top bar click Image then Resize. (The Resize box will open) 2. Type in the size that you want your file to be. 3. Click OK. 4. Repeat all of the steps for the photos you need to resize. Keep your files open. You will see each one in the tray at the top of your workspace. You can click on the thumbnail of the file that you want to work on.



tray

You are now ready to work on your swatch of fabric: You will need to create a blank workspace to start this process.

Step 1: Click on the Select/Create image button on the Pattern Design palette. The Select/Create Image window will open.

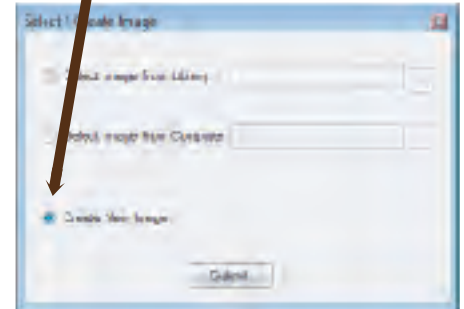
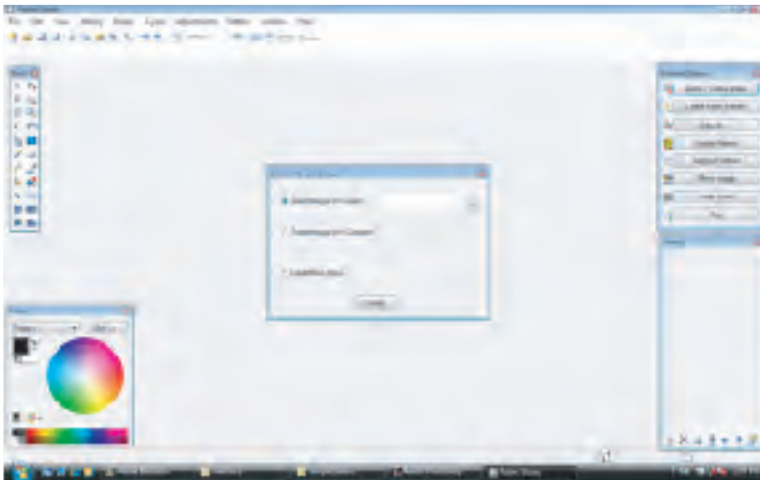


This is the Pattern Design Palette.



You will click here in FabricStudio

Step 2: Click the () button to the left of Create New Image

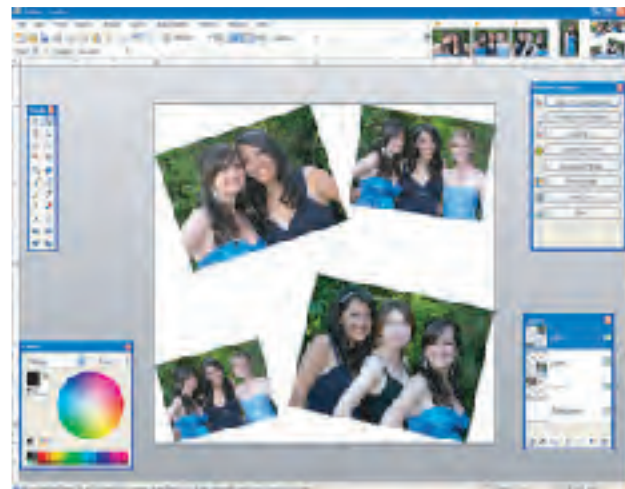


A new blank square will appear on your workspace. Make sure you can see your Layers Box on your workspace. If you can't, on the top row, click on Windows and then Layers.

Step 3: Add a new layer from the Layer Box,



By clicking on the image in the tray that you want to work on, you will select the image. You can rotate and resize each image and then copy it. Click on the new blank canvas and then paste your photo. Continue copying and pasting each image onto your canvas. You will want to create a new layer for each photo. This allows you to move and resize just the image that you want to.



When you have your file the way that you want click on File ,on the top row, and then Save.

Once your image is complete, you will need to save your image in a folder as a .png file. You will be asked to flatten your image before saving it.



See help screen for Auto-Fill Process.