

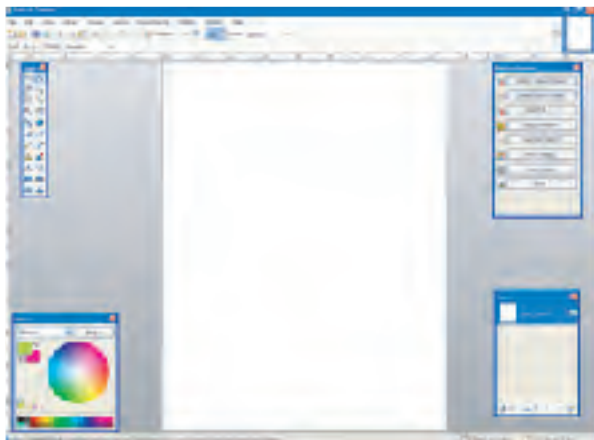
## Standard Size

## Create a Standard Size Pattern Sheet

The second phase of the Fabric Studio™ emphasizes the creation of a pattern. You have lots of options on how to create that pattern, so let's start with the basic method by using Auto Fill feature of the program.

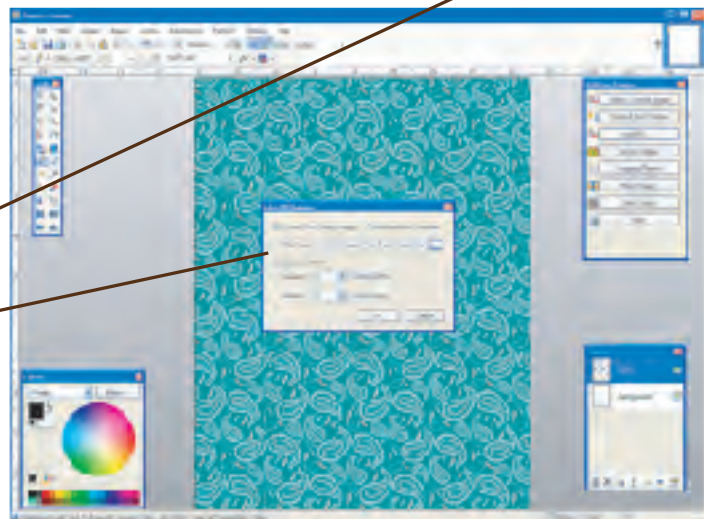
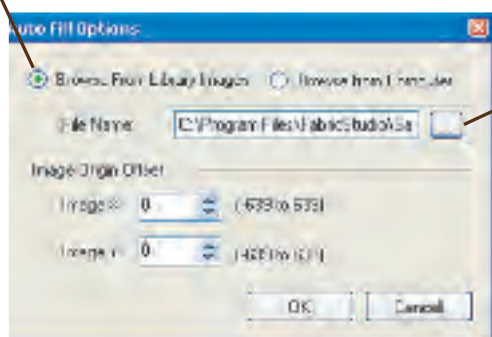
**Step 1:** Click on the Create Fabric Pattern button on the Pattern Design palette.

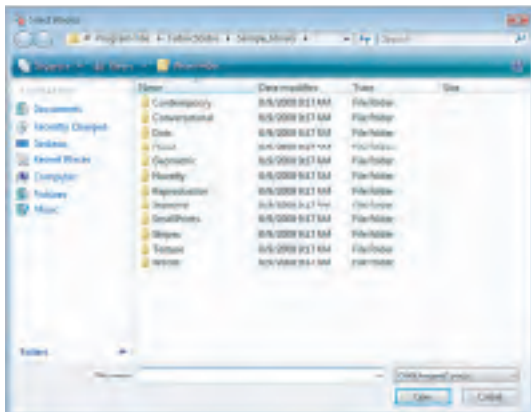
A standard 8 1/2 x 11 workspace will appear.



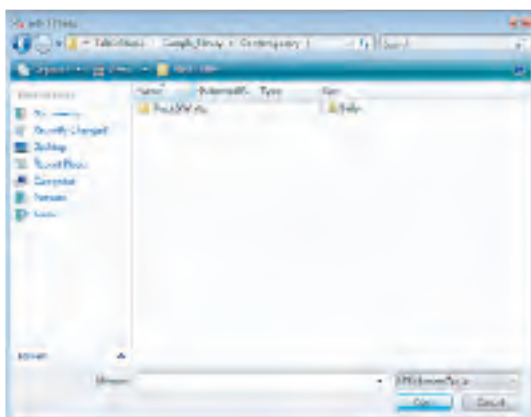
This is the Pattern Design Palette.

**Step 2:** Click on the "Auto Fill" button which will open the "Auto Fill Options" window. Select "Browse From Library Images" click on the browse button (  ) which will bring you the list of Library Images.

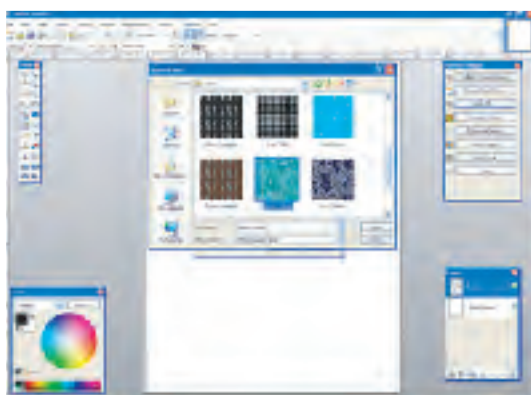




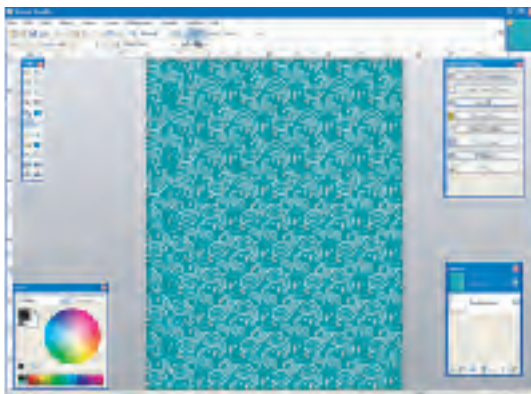
**Step 3: Locating Your Image:** Double click on the file folder you want to open. (We opened Contemporary)



Then double click on either Color or Black & White. (We opened Color)



Then find the image that you want and double click to open. (We opened Green Paisley)  
The Auto Fill Box will come up again, and click OK. Your Image will start to Auto Fill the Pattern Sheet.



**That's it!! You created a Fabric Sheet.** If you are satisfied with the results, you can print your image otherwise you can delete the layer by clicking on the delete layer button( ) and start again.