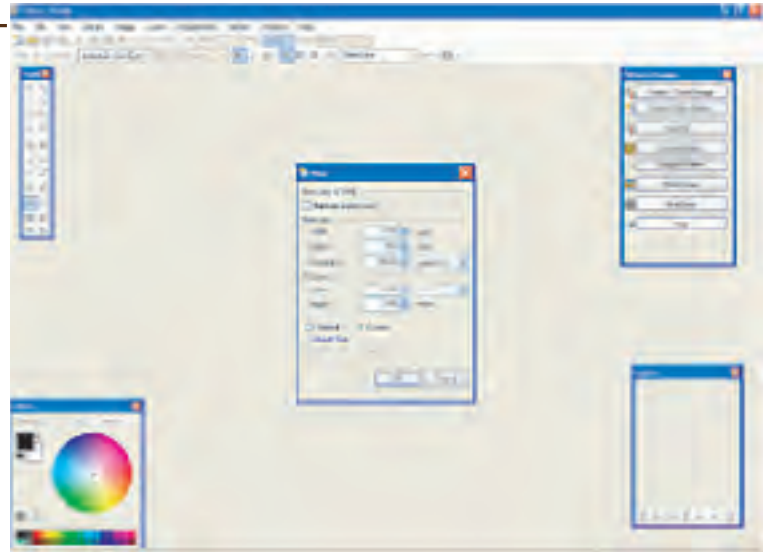


Custom Size

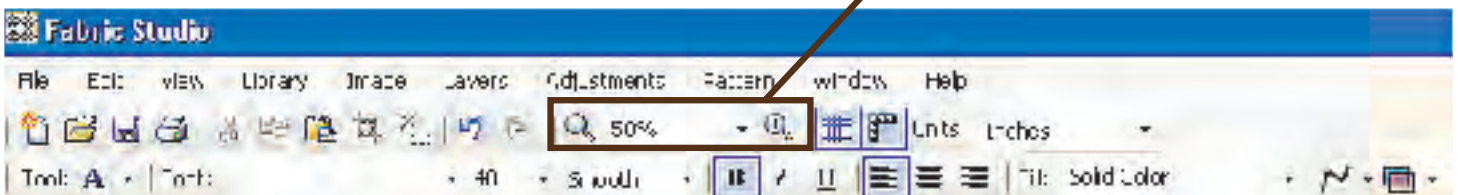
Customize the Size of Your Pattern

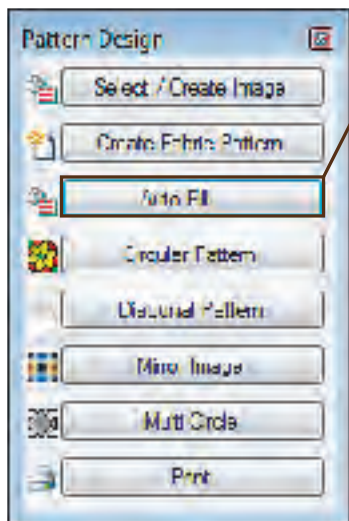
Step 1: Go to File/New/Custom.



Change your Resolution to 300 dpi,
Width and Height to desired size
(ours is 4.00" by 3.00")
and click okay.

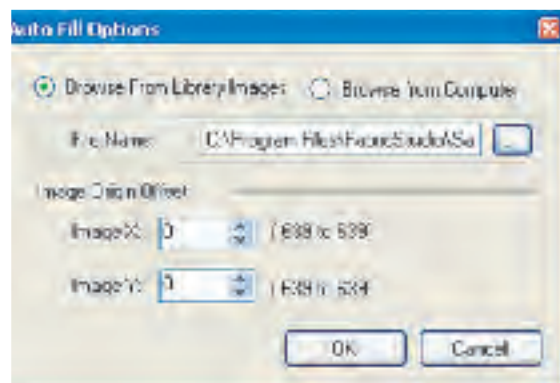


Your new custom image will appear on your workspace. You might want to adjust the size by using the Window pull down button to 50%. This will make it easier for you to work with.

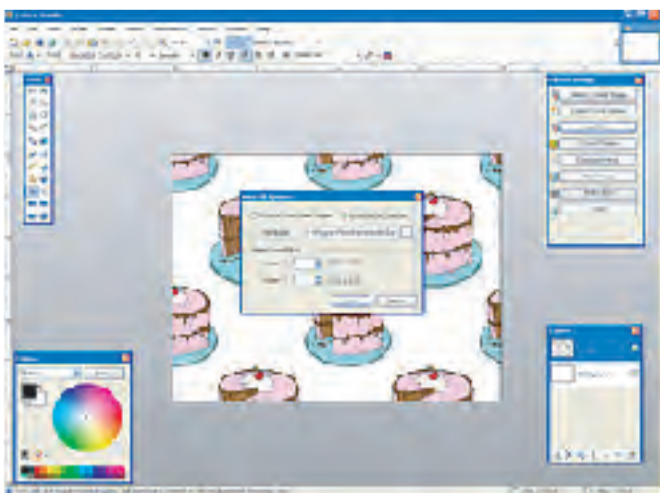





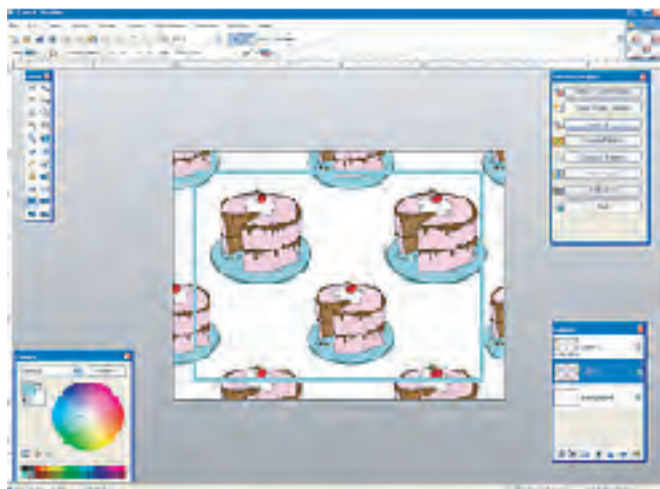
Step 2: Click on the Auto Fill button on the Pattern Design Window, Click the  button to the left of the "Browse From Library Images" or Browse from Computer then the Browse Button  to the right of "File Name" and locate the image that you want to use. (We opened





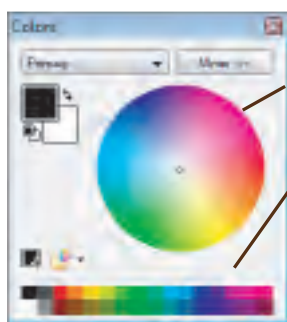
Novelty/Color/Pink Birthday Cake). The image will automatically start to fill in your image workspace. Click okay.



Step 3: Next you can add a Rectangle Box using the Rectangle tool  from the Tool Window. Left click, hold and drag mouse to create a rectangle. You will have several options. You will need to pick a color, brush

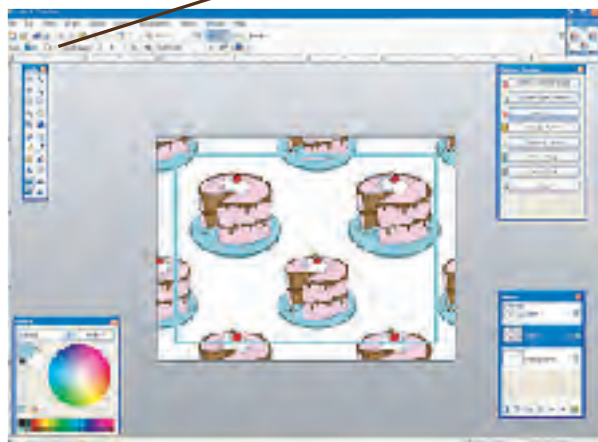



width and fill. (We used the "Color Picker" tool () to pick the blue from the Cake Plate. Once you click on the "Color Picker" tool (), click on the color in your image that you want to use. You can also choose a color in the Color window.



You can either click on a color on the wheel or pick a color on the color palette.


This is the bar that's on top of the window when you click onto the rectangle, rounded rectangle, ellipse or freeform tools.

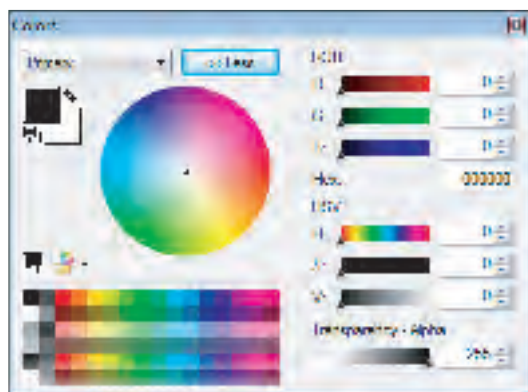
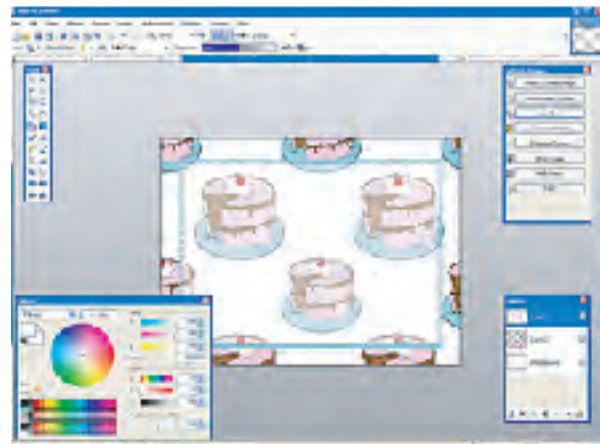



We used a brush width of 15 and the color is solid. Add a new layer by clicking on the "Add New Layer" button (). This will allow you to change the box without





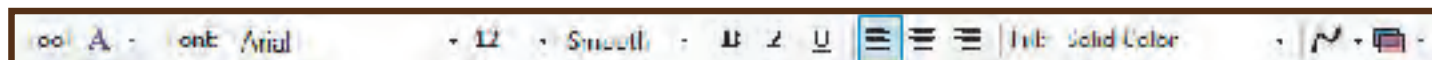
affecting the background image. Using your mouse pick a starting point to begin your Rectangle. Hold down your left button on your mouse and draw the mouse to the opposite corner. When you are satisfied with your Rectangle, release your finger. If you want to make an rounded rectangle, ellipse or a freeform, use the appropriate tool and make to same adjustment on the bar.



Step 4: You might want to lighten the area in your rectangle before you type your text. Using the Rectangle Select Tool, () pick a point within your Rectangle area, and using the left button on your mouse, drag the inner

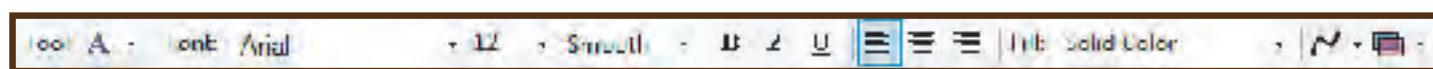


area of the Rectangle. Now go to the Color Box and expand it more clicking on "more". You will need to change your color to white, by clicking on the white square and adjust Transparency-Alpha to approximately 125. Now using the Paint Bucket Tool (), click in the newly selected area.

Step 5: Now you are ready to add your text. Click on add a new layer (). Select Type Tool (). You can select your font and size and other options on the Text Tool Bar

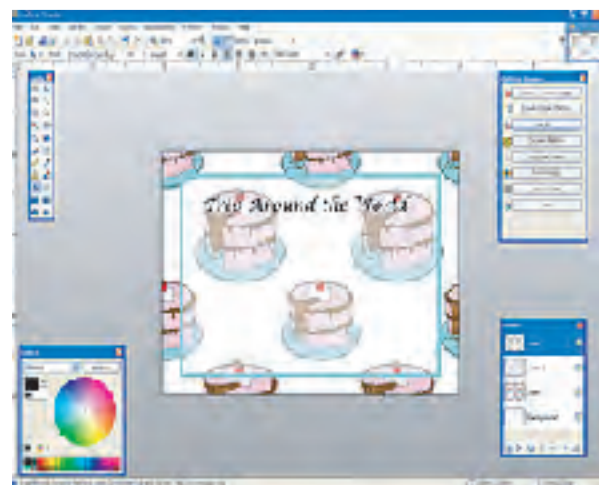


Step 5: Now you are ready to add your text. Click on add a new layer (). Select Type Tool (). You can select your font and size and other options on the Text Tool Bar.



Select the color on the Color Wheel for your text. You will want to use a color that shows up on your lightened image.

Step 6: Once you are finished with your text, you can print out your Quilt Label using the



Print Wizard (click on File then Print). We always print out a copy on plain paper before using a fabric sheet. Once you are happy with your design, save your file as either a .png or .jpeg file. Click on File then Save. Make sure that you know where you are saving your file, then type the name that you want to save the file as, then click Save.

