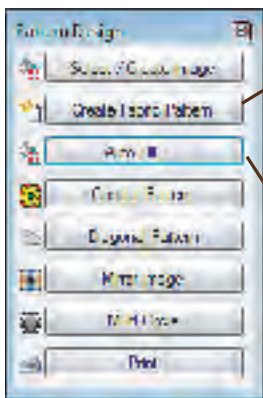


Autofill


Repeats and Drops using Auto Fill

Most of the images in our Libraries are seamless images. When you use Auto Fill with these seamless images they repeat and fill the workspace you have established. If you have a single image which you can find in the Novelty or Seasonal Libraries, you will want to use the formula to create a drop effect for your pattern which will cause the eye to move through the pattern.

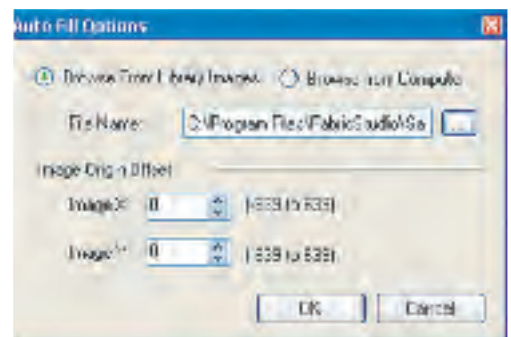
This drop is referred to as Isometric Movement.

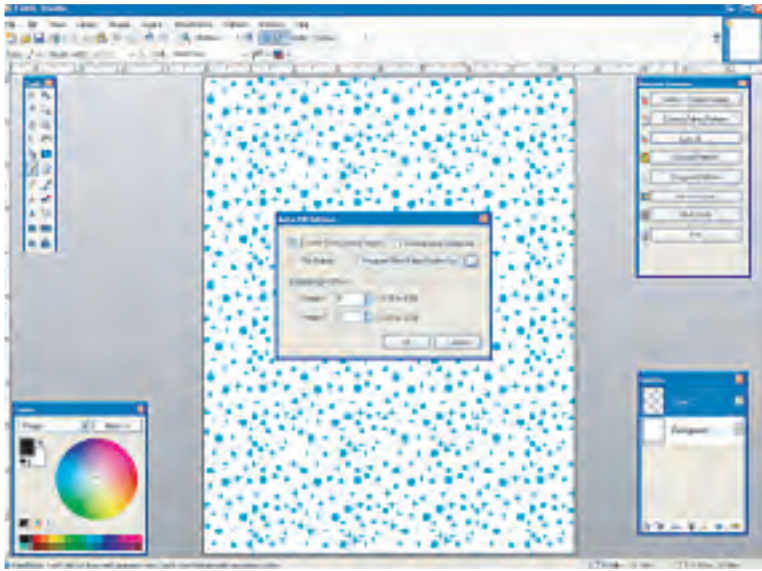


Step 1: Select "Create Fabric Pattern" from the Pattern Box. A new 8 1/2" fabric sheet will open.

Step 2: Click on the "Auto Fill" button which will open the "Auto Fills Option" window. Click on the () button to the left of "Browse From Library Images" to access Collections


then click on the browse button () to the right of "File Name".

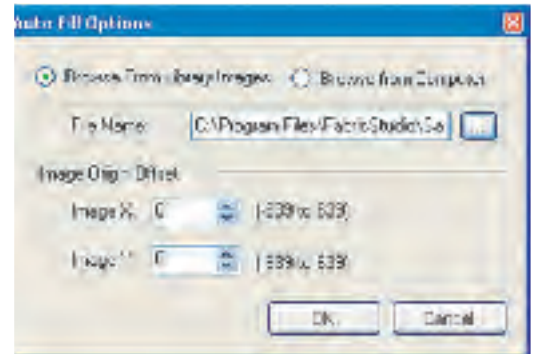




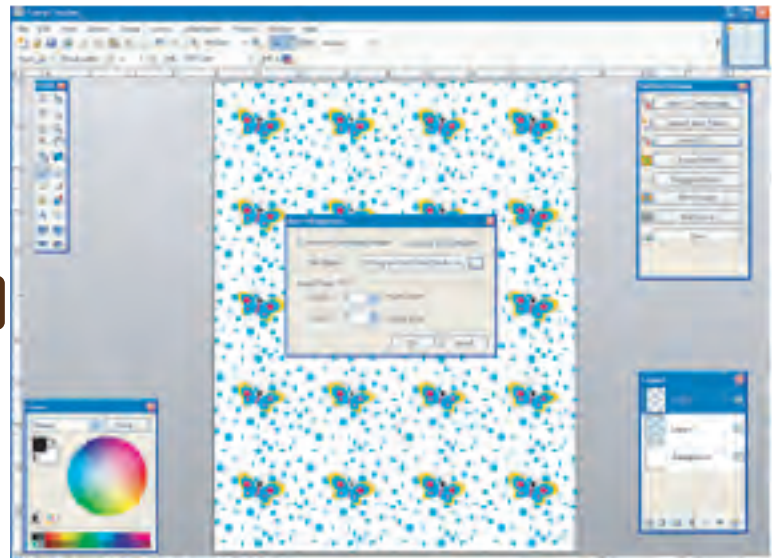
You will see the seamless image Auto Filling your workspace. We used (Dots/Color/Blue Small Dots). You will see the seamless image Auto Filling your workspace. Click Okay to accept image choice. Each time you use the



Step 3: Click again, on the "Auto Fill" button from the Pattern Design Window. Click on the () button to the left of "Browse From Library Images" for the images then click on the browse button () to the



right of "File Name". (We used Novelty/Color/Blue Butterfly) Click Okay. Your Butterfly Image will appear 4 across and 5 rows down)



Primary Color and then select your color from the color wheel or click on a color on the 2 rows of quick color swatches. Then you will need to select the Secondary Color the same way. If you have created the rest of your layers, like we have on this file, you will need to click on the background image on the layers window. If you are going to add a gradient to a new file the background layer is already selected. To make the gradient click and hold at the point that you want your gradient to start and then drag and release at the point that you want your gradient to end. If you want your colors switched just right click on one of the nubs (points). If you want to adjust the gradient, you can grab one of the nubs and move it. When you like the gradient click Enter on your keyboard.

