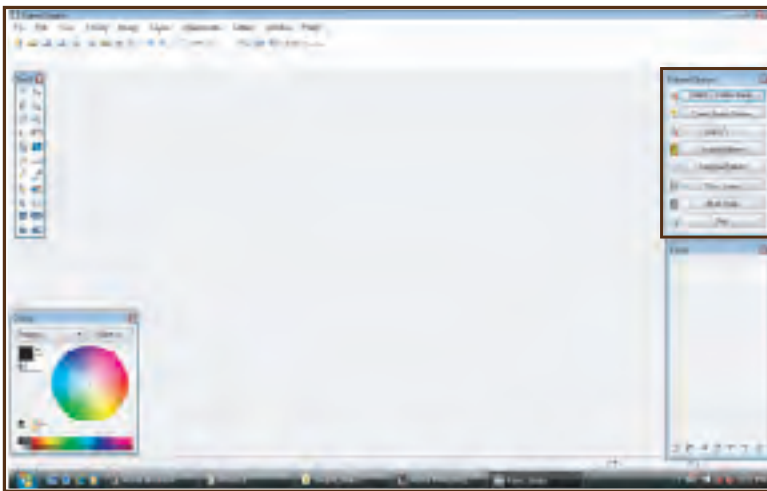


## Image Library

## How to pick an image from the Library

**Step 1:** Click on the **Select/Create** image button on the Pattern Design palette. The **Select/Create Image** window will open.

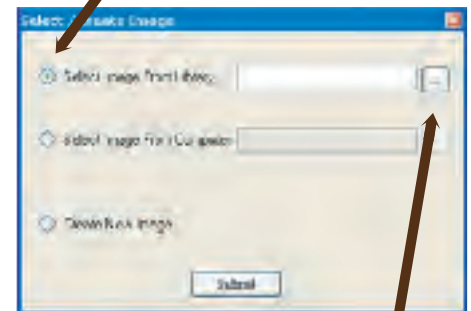
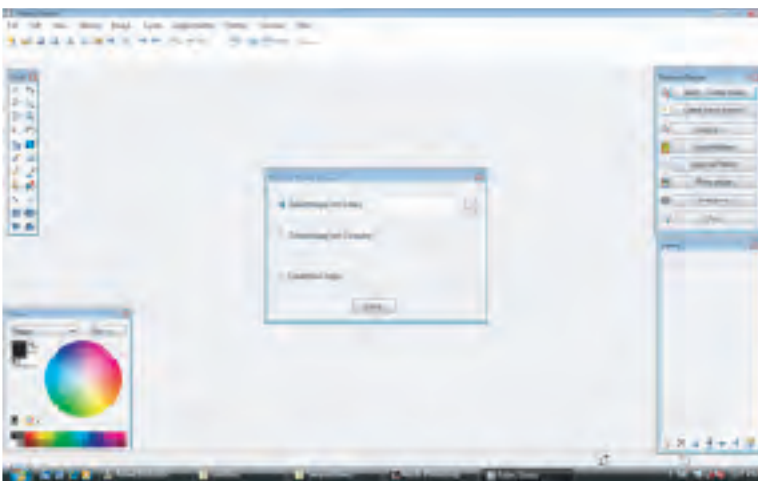


This is the Pattern Design Palette.



You will click here in FabricStudio

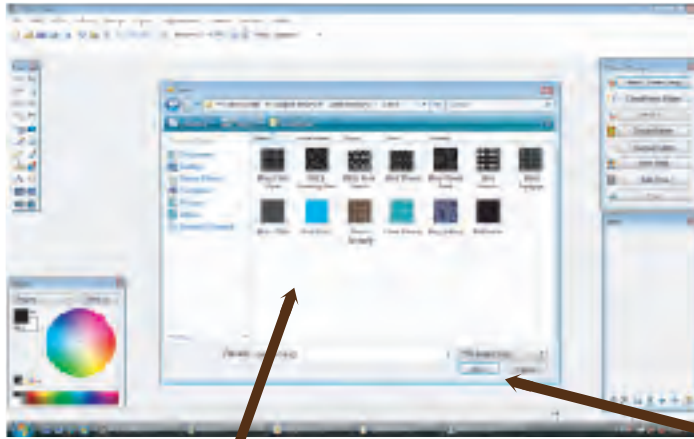
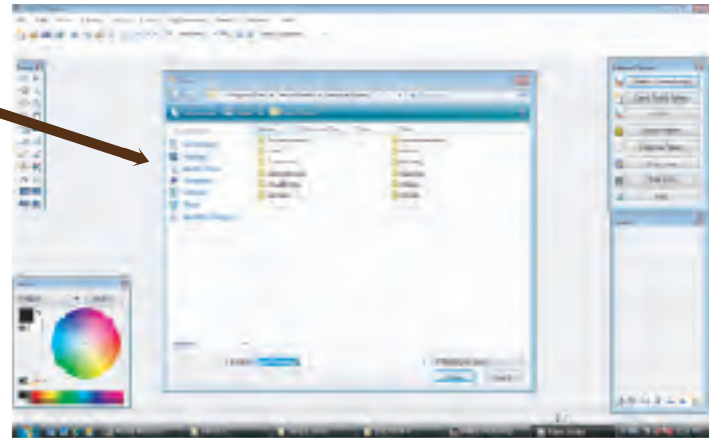
**Step 2:** Click the  button to the left of "Select Image From Library"



**Step 3:** Click the browse button  to the right of "Select Image Library"

(This will open a window where you will search for the image that you want to use from the FabricStudio library)

**Step 4:** Select the folder that you want and click open.



**Step 5:** Select the image that you want and click open.

**That's it! You have opened an image in the library!**

