

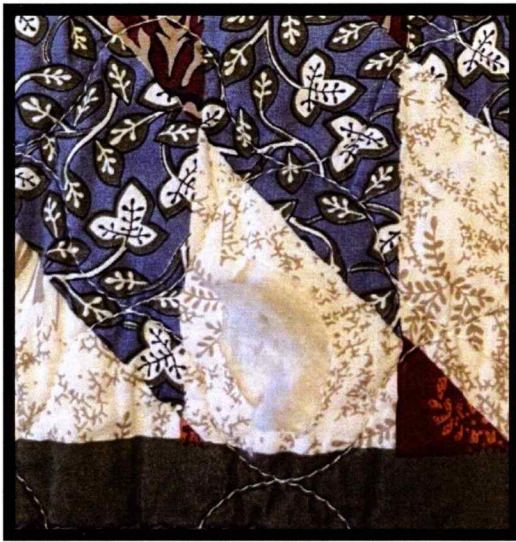
REPLACING TORN/DAMAGED FABRIC WITH SCANNED FABRIC

Using Inkjet Printables by Threads & Bo-Nash Fuse-It Powder Starter Kit

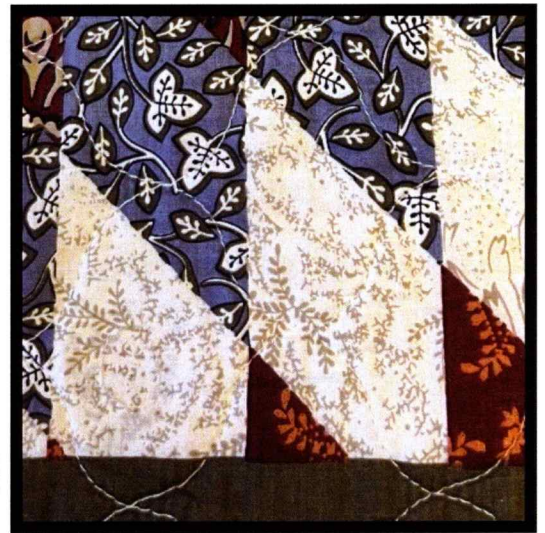
SUPPLIES NEEDED: Inkjet Printer with a scanner/copier, Inkjet Printables by Threads (either sheets or rolls) and Bo-Nash Fuse-it Powder Starter Kit (see accompanying page).

PROJECT PREPARATION: Before starting, make sure that the fabric that you're scanning is flat and free of wrinkles. Place your fabric on the scanner or copier glass within the margins provided. Close the cover of the printer carefully and place a small amount of pressure on top to hold it in place.

Damaged Quilt



Repaired Quilt



TESTING WITH PLAIN PAPER: Always print on plain paper before using the Inkjet Printables. Scanning the fabric will give you several printing options, whereas using a copier will limit those options somewhat. All printers/scanners differ so you will need to check your manual for option settings.

Here are examples of some scanner settings that work best for me: Mode: Photo Mode; Image Type: Color; Resolution: 300 dpi; Image Format: either Jpeg, Png or PDF.

PRINTING WITH INKJET PRINTABLES: Read the instructions that come with your Inkjet Printables before starting. Most Inkjet Printables will use either Plain Paper or Matte Presentation settings. If you have a more advance printer you will need to check out all options for best quality.

Place the Inkjet Printables in either your paper tray (fabric side will usually be faced down) or in the printer's top feed if available (fabric side will usually be facing out).

Once you have printed your fabric using the sheets, stabilize the ink by following the instructions that come with your fabric sheets.**MORE ADVANCED PRINTING:** Some fabric designs also allow you to scan a small torn/damaged piece from one of your projects and then create a much larger repeat of that same fabric by using our program easyfab Design Studio. Visit our website at www.easymade.com and check out our videos under Help.

BO-NASH FUSE-IT POWDER STARTER KIT

Now Let's Repair!

Checkout "How to videos" "Hole in Quilt" on www.bonash.com

Please practice technique before using for the first time!

Don't practice on your important project

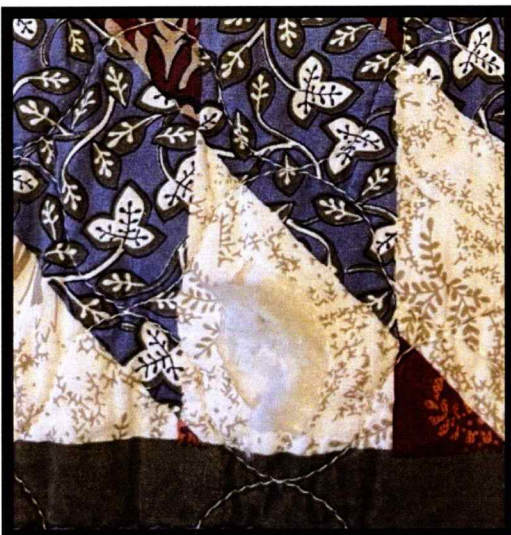
1. Trim away any burnt or frayed edges from the original fabric to be repaired.
2. Cut out a piece of the new fabric larger than the missing piece, matching the pattern. Lay this piece on **Bo-Nash Fiberglass non-stick Sheet**. Mask off the part of the printed fabric that will show through the missing area with another piece of fabric and sprinkle the **Fuse It Powder** around the edges that are still visible. (Make sure powder is only around edges.) Cover with the other **Fiberglass non-stick Sheet** and iron **the Fuse It Powder** in place. The replacement piece of "New" fabric is now pre-fused and ready.
3. Remove Fiberglass sheets and clean thoroughly so no powder residue is sticking, so it cannot be transferred during the final stage. Remove masking fabric.
4. Manipulate the pre-fused fabric piece through the hole from the right side and make sure it is in the correct place to match the pattern. Make sure powder is only around edges. Cover with the **Fiberglass non-stick Sheet** and iron with a hot(cotton/linen) dry iron for 3-4 seconds (longer for thicker fabrics.) Make sure you have cleaned the sheet previously so no powder can be transferred.

Now the piece is fused in place and in most cases it will be invisible.

No stitch marks to show.

How invisible the repair will depend on fabric, pattern and YOUR technique, so practice FIRST so you know what you are doing!!

Damaged Quilt



Repaired Quilt

